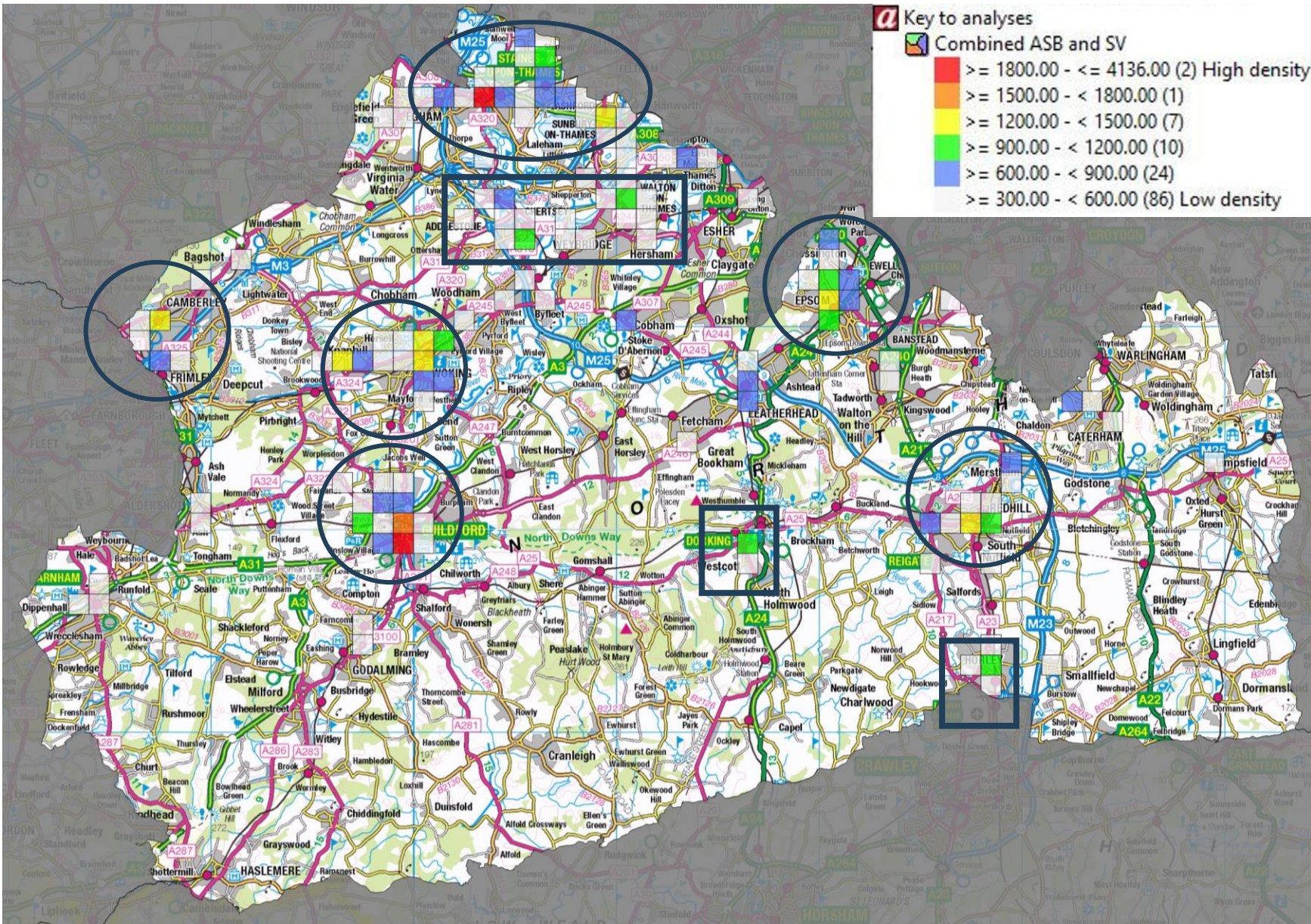
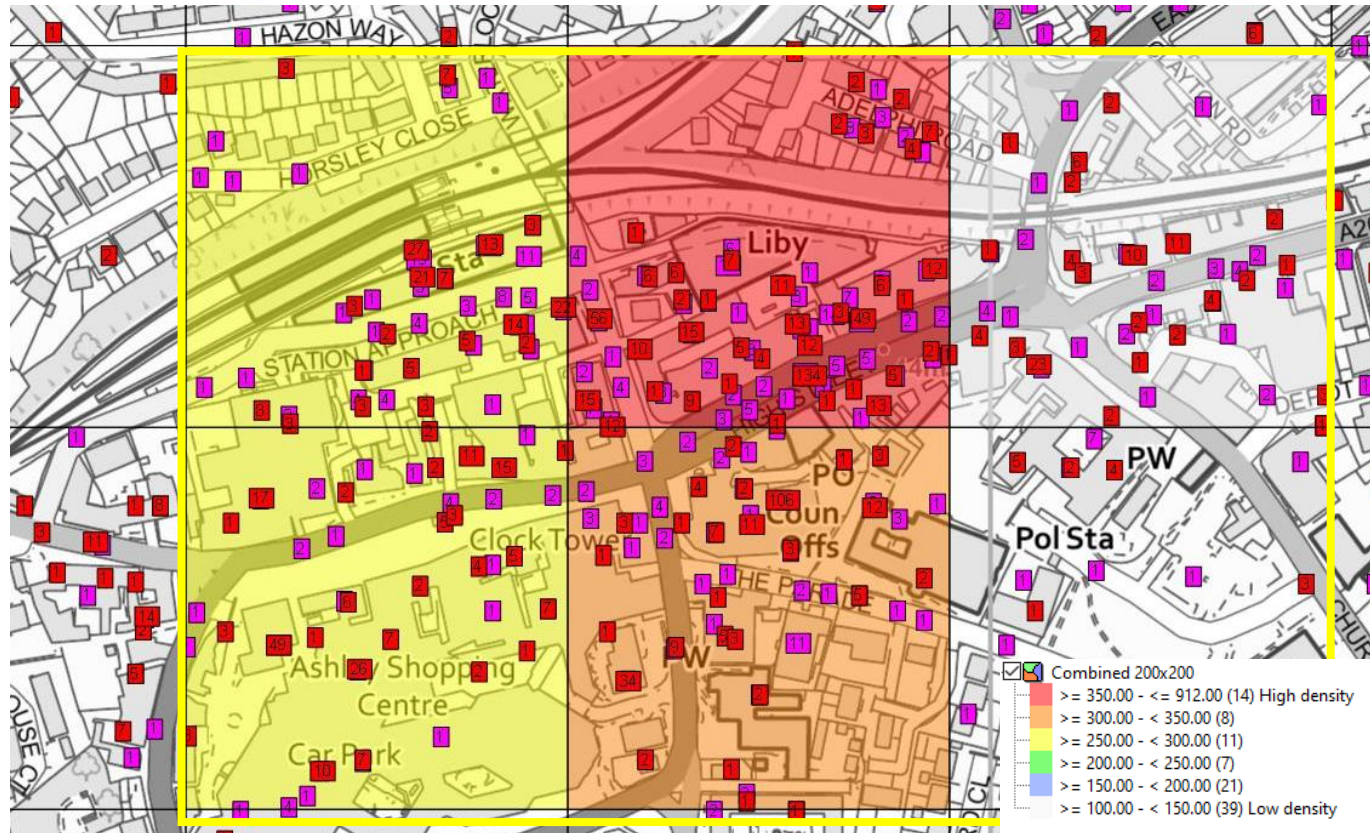


- This map shows the intensity of both ASB and Serious Violence incidents within 1000 x 1000m squares across the whole force. This identifies wider hotspots to focus on.
- Primary Hotspots (circled) are found within Guildford, Woking / Knaphill, Epsom, Redhill, Staines and Camberley.
- There are secondary hotspots (boxed) dotted around the force including Dorking, Horley, Walton and Addlestone.
- Tertiary hotspots are seen in Caterham, Cobham, Leatherhead and West Molesey. These will be reviewed separately as they will not appear as areas of interest alongside more intense hotspots.
- Slides to follow will outline hotspots and target areas.



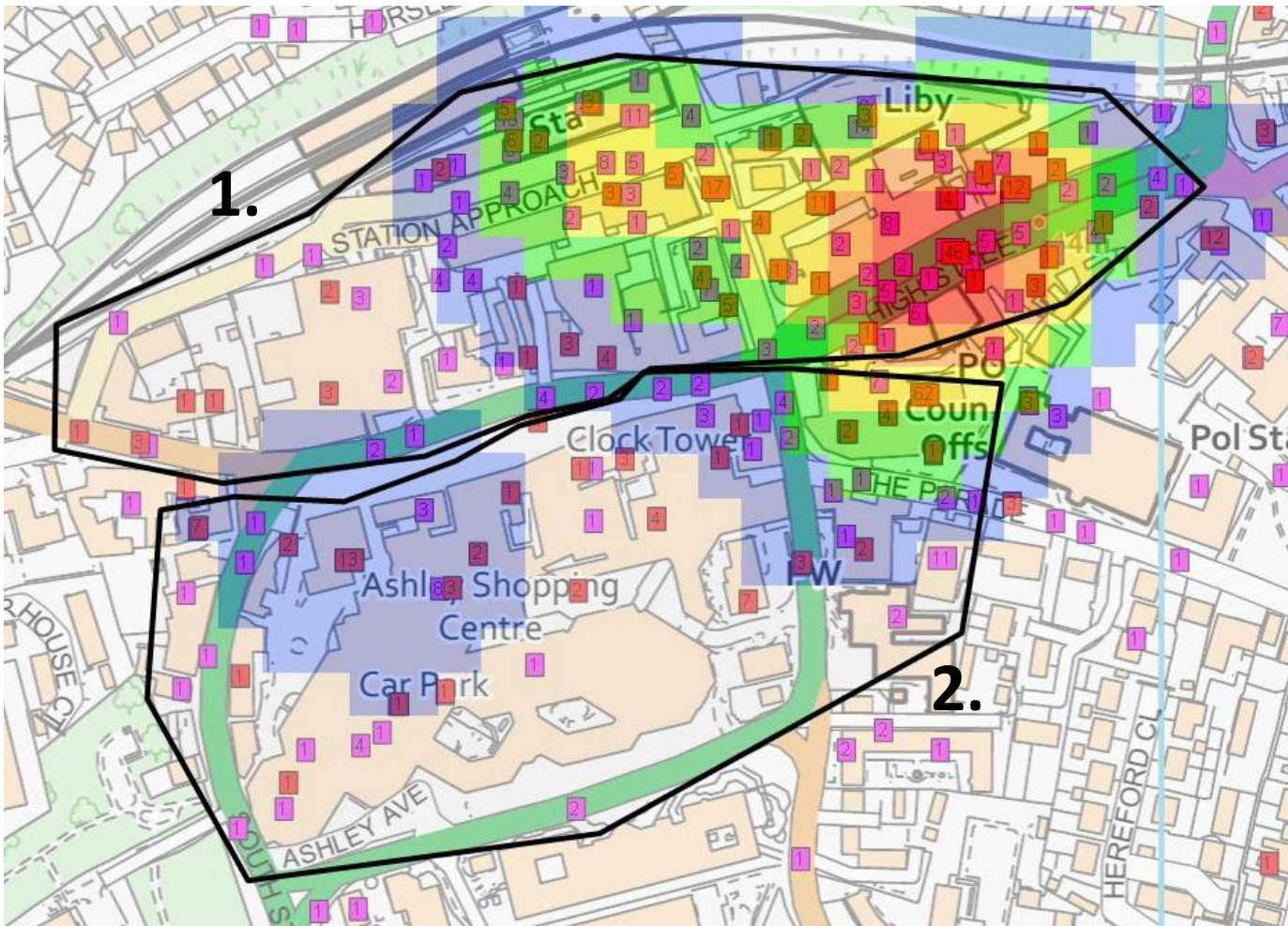
Epsom Hotspot



- The primary area of interest in Epsom is around the High Street and Station Approach.
- There is potential that the council office / police station has created a miniature location of interest in the Southern section of this area.
- Within the highlighted area (600 x 400m):

Serious Violence Incidents: 1111	ASB Incidents: 547
24 & Under: 200	ASB Environmental: 17
25 & Over: 310	ASB Nuisance: 454
u/k age: 601	ASB Personal: 76

Epsom Hotspot



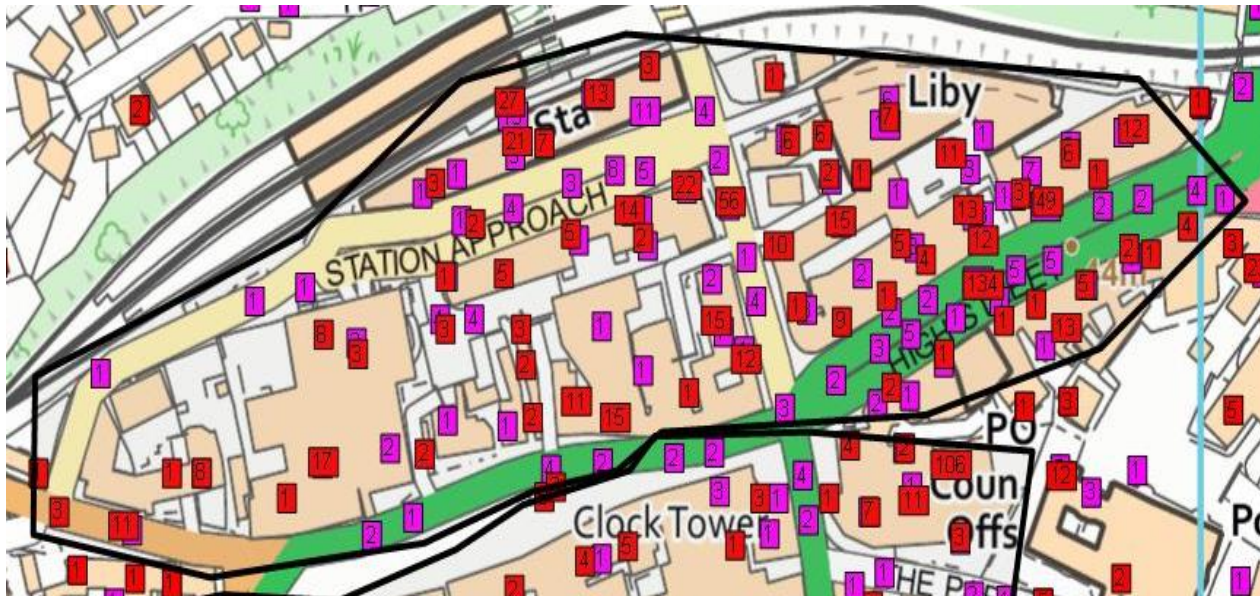
- There are two areas of interest in Epsom, the High Street / Station approach area, and the Ashley Shopping centre.

Zone	SV Count	ASB Count
1. High Street	639	353
2. Ashley Centre	362	107

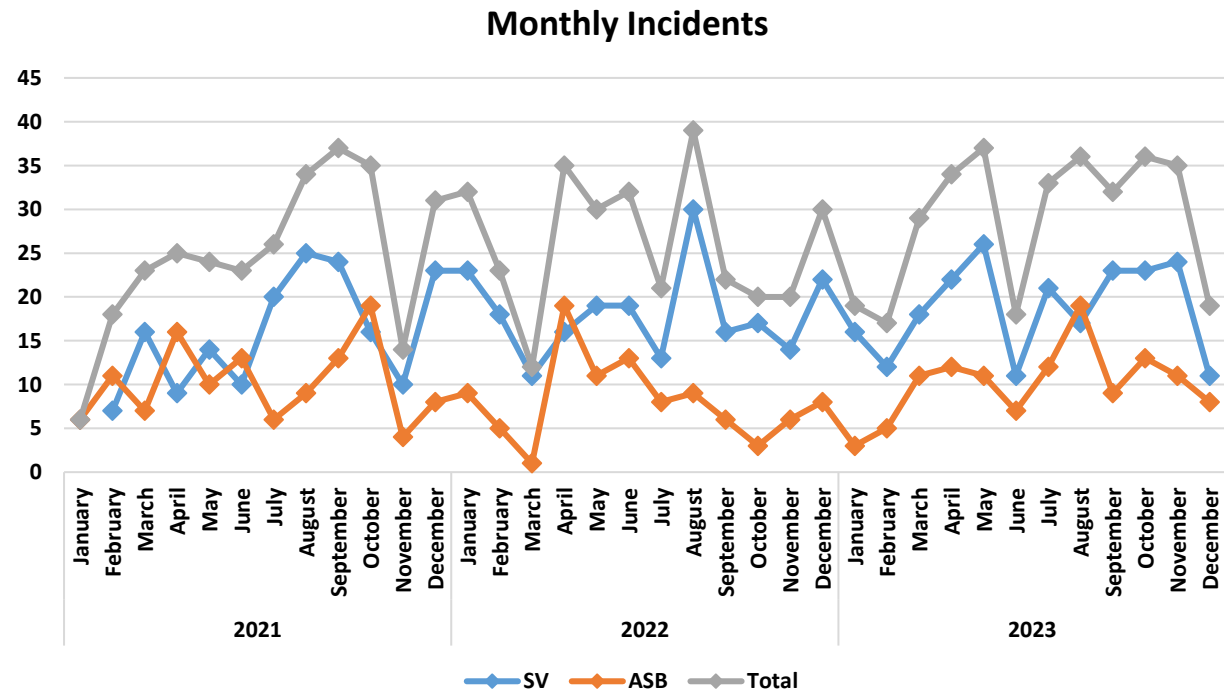
Zone	VWI and Robbery Count	% of days with relevant offence
1. High Street	171	16%
2. Ashley Centre	127	12%

- Both Hotspots meet the 10% of days requirement for relevant incidents (Violence with Injury and Robbery).

Epsom Hotspot 1 – High Street



- This patrol zone is approx. 61,684 sqm. There is an average of 26.6 ASB or SV incidents recorded per month. **Serious Violence is more prominent; however, it is likely that many forms of ASB do not get reported or are later crimed.**
- Serious Violence stayed relatively even 2022>2023 and appears to follow relatively similar trends. ASB is shown to fluctuate.



Epsom Hotspot 1 – High Street

Serious Violence

Peak incidents are seen early hours on Sat and Sun. Secondary peak 18:00-20:00

It is likely that increases Friday and Saturday early evening link to Nighttime economy.

Hour	Mon	Tue	Wed	Thu	Fri	Sat	Sun	Total
00:00-00:59	3.0	2.0	1.0	1.5	3.5	27.0	22.7	61
01:00-01:59	1.0	0.0	0.0	0.3	9.0	17.5	15.7	43
02:00-02:59	0.0	0.0	0.0	0.3	5.0	16.8	16.2	38
03:00-03:59	0.0	0.0	0.0	0.3	3.5	16.9	16.7	37
04:00-04:59	0.0	1.0	0.0	0.3	1.5	4.4	3.6	11
05:00-05:59	0.0	1.0	0.0	0.0	0.1	2.9	0.1	4
06:00-06:59	0.0	0.0	0.5	1.0	0.1	0.2	0.1	2
07:00-07:59	1.0	1.0	0.5	0.5	0.1	0.2	1.1	4
08:00-08:59	1.0	1.0	1.0	0.5	1.1	1.2	0.1	6
09:00-09:59	3.1	3.0	0.0	0.0	0.1	3.2	3.1	13
10:00-10:59	1.3	1.0	3.0	2.0	1.1	0.2	2.1	11
11:00-11:59	1.3	1.3	0.0	0.0	4.1	6.2	0.0	13
12:00-12:59	4.3	1.3	1.0	3.1	6.6	2.2	6.2	25
13:00-13:59	1.3	3.3	4.5	5.1	3.6	2.2	2.2	22
14:00-14:59	4.3	7.0	5.0	2.1	3.1	4.2	3.2	29
15:00-15:59	5.3	2.0	5.8	3.6	2.1	4.1	5.2	28
16:00-16:59	3.1	5.0	2.3	6.6	2.1	8.1	2.2	29
17:00-17:59	7.6	4.0	3.4	6.1	10.4	5.1	1.2	38
18:00-18:59	3.9	2.0	5.4	7.4	7.6	11.1	6.0	43
19:00-19:59	3.3	7.3	1.9	6.9	8.1	10.1	3.0	40
20:00-20:59	2.0	1.3	4.9	3.4	5.3	6.3	2.0	25
21:00-21:59	3.0	6.3	3.4	6.6	10.5	4.3	1.0	35
22:00-22:59	3.8	0.3	1.4	4.1	9.5	10.3	5.0	34
23:00-23:59	3.8	1.0	0.9	2.1	6.5	10.8	0.0	25
Total	57	52	46	64	105	175	118	617

ASB

Incidents are most common over the weekend. The primary peak is 18:00-19:00, with incidents remaining high in the hour either side of this.

Secondary peak in the early weekend hours.

Hour	Mon	Tue	Wed	Thu	Fri	Sat	Sun	Total
00:00-00:59	0.0	3.0	1.0	1.0	3.0	6.0	7.0	21
01:00-01:59	0.0	2.0	0.0	1.0	0.0	11.0	8.0	22
02:00-02:59	2.0	1.0	0.0	0.0	3.0	11.0	6.0	23
03:00-03:59	0.0	1.0	0.0	0.0	5.0	7.0	5.0	18
04:00-04:59	0.0	0.0	0.0	0.0	0.0	2.0	1.0	3
05:00-05:59	0.0	0.0	0.0	0.0	0.0	0.0	0.0	0
06:00-06:59	0.0	0.0	0.0	0.0	1.0	1.0	1.0	3
07:00-07:59	0.0	0.0	0.0	1.0	1.0	0.0	0.0	2
08:00-08:59	1.0	0.0	2.0	0.0	0.0	1.0	0.0	4
09:00-09:59	0.0	0.0	0.0	0.0	0.0	2.0	0.0	2
10:00-10:59	3.0	0.0	1.0	2.0	0.0	3.0	3.0	12
11:00-11:59	0.0	0.0	1.0	1.0	2.0	5.0	0.0	9
12:00-12:59	1.0	2.0	4.0	1.0	1.0	2.0	4.0	15
13:00-13:59	5.0	0.0	2.0	2.0	0.0	1.0	1.0	11
14:00-14:59	4.0	1.0	2.0	3.0	5.0	1.0	3.0	19
15:00-15:59	3.0	0.0	5.0	2.0	0.0	5.0	4.0	19
16:00-16:59	3.0	4.0	2.0	2.0	3.0	1.0	5.0	20
17:00-17:59	3.0	4.0	4.0	5.0	2.0	4.0	4.0	26
18:00-18:59	3.0	4.0	6.0	10.0	4.0	5.0	9.0	41
19:00-19:59	4.0	6.0	0.0	3.0	5.0	1.0	4.0	23
20:00-20:59	0.0	1.0	1.0	2.0	6.0	5.0	1.0	16
21:00-21:59	4.0	0.0	2.0	4.0	5.0	1.0	2.0	18
22:00-22:59	4.0	0.0	0.0	3.0	3.0	3.0	0.0	13
23:00-23:59	2.0	2.0	2.0	0.0	4.0	4.0	1.0	15
Total	42	31	35	43	53	82	69	355

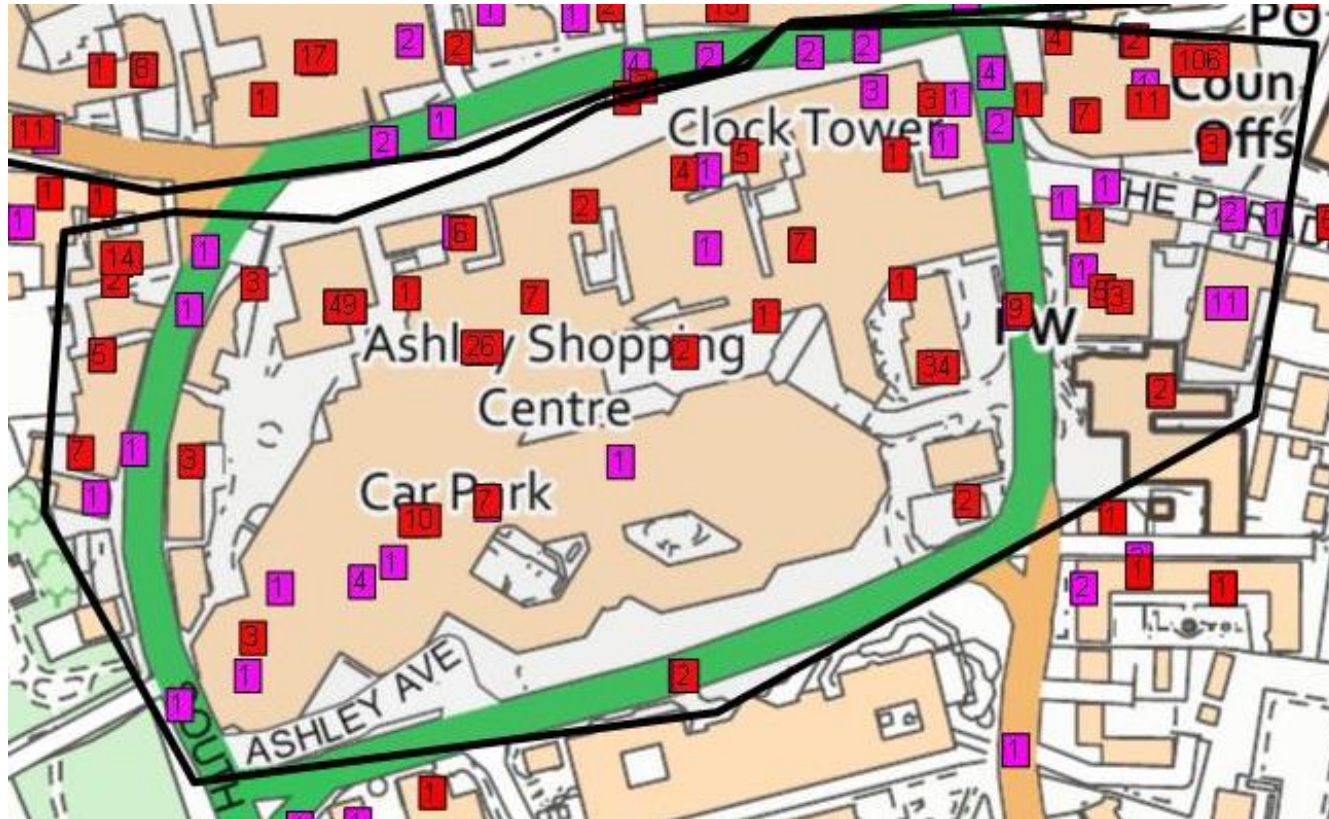
Combined

Two peak have been identified: 17:00 – 20:00 and 00:00 – 04:00. Incidents remain notable between these peaks.

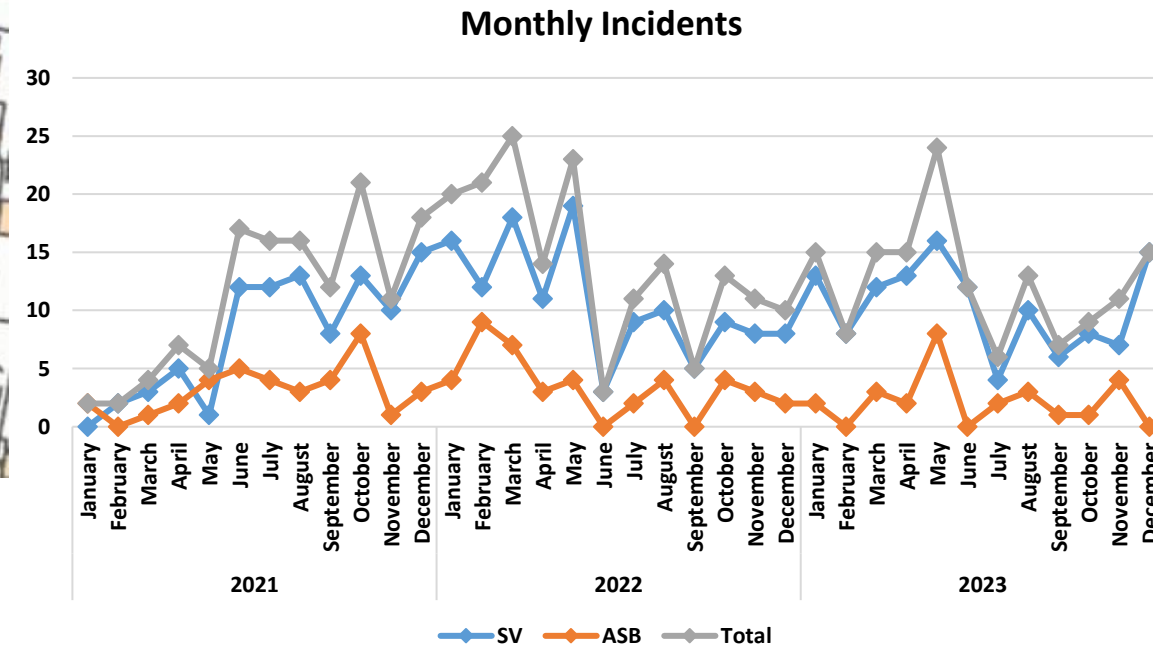
Patrols should be conducted in line with Nighttime economy and post school hours.

Hour	Mon	Tue	Wed	Thu	Fri	Sat	Sun	Total
00:00-00:59	3.0	5.0	2.0	2.5	6.5	33.0	29.7	82
01:00-01:59	1.0	2.0	0.0	1.3	9.0	28.5	23.7	65
02:00-02:59	2.0	1.0	0.0	0.3	8.0	27.8	22.2	61
03:00-03:59	0.0	1.0	0.0	0.3	8.5	23.9	21.7	55
04:00-04:59	0.0	1.0	0.0	0.3	1.5	6.4	4.6	14
05:00-05:59	0.0	1.0	0.0	0.0	0.1	2.9	0.1	4
06:00-06:59	0.0	0.0	0.5	1.0	1.1	1.2	1.1	5
07:00-07:59	1.0	1.0	0.5	1.5	1.1	0.2	1.1	6
08:00-08:59	2.0	1.0	3.0	0.5	1.1	2.2	0.1	10
09:00-09:59	3.1	3.0	0.0	0.0	0.1	5.2	3.1	15
10:00-10:59	4.3	1.0	4.0	4.0	1.1	3.2	5.1	23
11:00-11:59	1.3	1.3	1.0	1.0	6.1	11.2	0.0	22
12:00-12:59	5.3	3.3	5.0	4.1	7.6	4.2	10.2	40
13:00-13:59	6.3	3.3	6.5	7.1	3.6	3.2	3.2	33
14:00-14:59	8.3	8.0	7.0	5.1	8.1	5.2	6.2	48
15:00-15:59	8.3	2.0	10.8	5.6	2.1	9.1	9.2	47
16:00-16:59	6.1	9.0	4.3	8.6	5.1	9.1	7.2	49
17:00-17:59	10.6	8.0	7.4	11.1	12.4	9.1	5.2	64
18:00-18:59	6.9	6.0	11.4	17.4	11.6	16.1	15.0	84
19:00-19:59	7.3	13.3	1.9	9.9	13.1	11.1	7.0	63
20:00-20:59	2.0	2.3	5.9	5.4	11.3	11.3	3.0	41
21:00-21:59	7.0	6.3	5.4	10.6	15.5	5.3	3.0	53
22:00-22:59	7.8	0.3	1.4	7.1	12.5	13.3	5.0	47
23:00-23:59	5.8	3.0	2.9	2.1	10.5	14.8	1.0	40
Total	99	83	81	107	158	257	187	972

Epsom Hotspot 2 – Ashley Shopping Centre



- This patrol zone is approx. 63,218 sqm. There is a lower monthly average of 12.5 ASB or SV incidents recorded per month.
- Serious Violence saw minimal change in 2022 > 2023. ASB decreased in 2023 and remains relatively low.



Epsom Hotspot 2 – Ashley Shopping Centre

Serious Violence

Incidents most common Fri – Sunday.

Influence of the nighttime economy is notable with the majority of incidents appearing to be linked to this. There are individual spikes on midweek days.

ASB

There are fewer ASB incidents making temporal analysis of ASB less insightful.

There appear to be three periods of interest: 13:00–17:00, 19:00–22:00 and 01:00–04:00.

Incidents are higher Thursday – Sunday.

Combined

Peak incidents are 23:00–04:00 over the weekend.

There are small spikes in activity during the week. There is a small increase in activity from 14:00 – 18:00 over the course of the data.

Hour	Mon	Tue	Wed	Thu	Fri	Sat	Sun	Total
00:00-00:59	2.1	1.1	1.7	0.0	3.2	13.8	12.1	34
01:00-01:59	1.1	0.1	0.7	0.0	5.7	23.8	12.6	44
02:00-02:59	0.6	0.1	0.2	0.0	1.9	17.1	12.6	32
03:00-03:59	2.6	0.1	0.2	0.0	2.4	6.8	10.1	22
04:00-04:59	0.1	0.1	0.2	0.0	1.1	1.0	2.6	5
05:00-05:59	0.1	0.1	0.2	0.0	0.1	0.1	0.0	1
06:00-06:59	0.1	0.1	0.2	1.0	0.1	0.1	1.0	3
07:00-07:59	0.1	0.1	1.2	0.0	0.1	1.1	0.0	3
08:00-08:59	0.1	0.1	0.2	0.0	0.1	0.1	0.0	1
09:00-09:59	0.1	0.1	0.2	0.0	0.0	0.1	1.0	1
10:00-10:59	0.1	1.1	0.2	0.0	0.0	1.1	1.0	3
11:00-11:59	0.1	0.1	1.2	0.0	3.0	4.1	4.0	12
12:00-12:59	0.1	2.1	1.2	3.2	1.0	0.1	1.0	9
13:00-13:59	2.1	1.1	0.7	1.7	3.0	0.1	5.0	14
14:00-14:59	7.1	2.1	0.7	0.7	3.0	2.1	1.5	17
15:00-15:59	1.1	2.1	1.8	3.7	3.0	2.1	4.0	18
16:00-16:59	1.6	2.1	6.3	7.7	3.0	1.6	0.6	23
17:00-17:59	1.6	3.2	5.3	3.2	3.0	1.6	0.1	18
18:00-18:59	1.1	2.2	3.1	1.5	3.0	2.1	2.1	15
19:00-19:59	0.1	1.2	2.1	0.5	0.0	1.1	1.1	6
20:00-20:59	0.4	0.2	0.1	2.0	3.1	5.1	2.1	13
21:00-21:59	0.3	2.2	1.1	0.1	1.1	1.6	1.1	7
22:00-22:59	2.3	0.2	0.1	2.1	9.1	2.6	3.1	19
23:00-23:59	1.3	2.2	1.1	2.4	12.3	8.6	3.1	31
Total	26	24	29	30	63	97	82	351

Hour	Mon	Tue	Wed	Thu	Fri	Sat	Sun	Total
00:00-00:59	0.0	0.0	0.0	1.0	1.0	1.0	0.0	3
01:00-01:59	0.0	1.0	0.0	0.0	1.0	5.0	3.0	10
02:00-02:59	0.0	0.0	1.0	1.0	1.0	5.0	3.0	11
03:00-03:59	0.0	0.0	0.0	1.0	1.0	3.0	1.0	6
04:00-04:59	0.0	0.0	0.0	0.0	1.0	1.0	1.0	3
05:00-05:59	0.0	0.0	0.0	0.0	0.0	0.0	0.0	0
06:00-06:59	0.0	0.0	0.0	0.0	0.0	0.0	0.0	0
07:00-07:59	0.0	0.0	0.0	0.0	0.0	0.0	0.0	0
08:00-08:59	0.0	2.0	0.0	0.0	0.0	0.0	0.0	2
09:00-09:59	0.0	1.0	0.0	0.0	0.0	0.0	0.0	1
10:00-10:59	0.0	0.0	0.0	0.0	1.0	0.0	0.0	1
11:00-11:59	1.0	0.0	0.0	1.0	1.0	0.0	0.0	3
12:00-12:59	0.0	0.0	2.0	0.0	1.0	0.0	1.0	4
13:00-13:59	1.0	2.0	1.0	0.0	0.0	1.0	1.0	6
14:00-14:59	2.0	2.0	0.0	2.0	0.0	1.0	0.0	7
15:00-15:59	1.0	1.0	1.0	0.0	1.0	0.0	0.0	4
16:00-16:59	0.0	1.0	0.0	2.0	3.0	0.0	1.0	7
17:00-17:59	0.0	0.0	0.0	0.0	0.0	2.0	2.0	4
18:00-18:59	0.0	1.0	0.0	0.0	0.0	0.0	1.0	2
19:00-19:59	0.0	0.0	2.0	2.0	2.0	1.0	1.0	8
20:00-20:59	0.0	1.0	2.0	4.0	1.0	0.0	0.0	8
21:00-21:59	0.0	0.0	1.0	3.0	1.0	1.0	3.0	9
22:00-22:59	0.0	0.0	1.0	1.0	1.0	0.0	0.0	3
23:00-23:59	0.0	0.0	1.0	0.0	3.0	1.0	0.0	5
Total	5	12	12	18	20	22	18	107

Hour	Mon	Tue	Wed	Thu	Fri	Sat	Sun	Total
00:00-00:59	2.1	1.1	1.7	1.0	4.2	14.8	12.1	37
01:00-01:59	1.1	1.1	0.7	0.0	6.7	28.8	15.6	54
02:00-02:59	0.6	0.1	1.2	1.0	2.9	22.1	15.6	43
03:00-03:59	2.6	0.1	0.2	1.0	3.4	9.8	11.1	28
04:00-04:59	0.1	0.1	0.2	0.0	2.1	2.0	3.6	8
05:00-05:59	0.1	0.1	0.2	0.0	0.1	0.1	0.0	1
06:00-06:59	0.1	0.1	0.2	1.0	0.1	0.1	1.0	3
07:00-07:59	0.1	0.1	1.2	0.0	0.1	1.1	0.0	3
08:00-08:59	0.1	2.1	0.2	0.0	0.1	0.1	0.0	3
09:00-09:59	0.1	1.1	0.2	0.0	0.0	0.1	1.0	2
10:00-10:59	0.1	1.1	0.2	0.0	1.0	1.1	1.0	4
11:00-11:59	1.1	0.1	1.2	1.0	4.0	4.1	4.0	15
12:00-12:59	0.1	2.1	3.2	3.2	2.0	0.1	2.0	13
13:00-13:59	3.1	3.1	1.7	1.7	3.0	1.1	6.0	20
14:00-14:59	9.1	4.1	0.7	2.7	3.0	3.1	1.5	24
15:00-15:59	2.1	3.1	2.8	3.7	4.0	2.1	4.0	22
16:00-16:59	1.6	3.1	6.3	9.7	6.0	1.6	1.6	30
17:00-17:59	1.6	3.2	5.3	3.2	3.0	3.6	2.1	22
18:00-18:59	1.1	3.2	3.1	1.5	3.0	2.1	3.1	17
19:00-19:59	0.1	1.2	4.1	2.5	2.0	2.1	2.1	14
20:00-20:59	0.4	1.2	2.1	6.0	4.1	5.1	2.1	21
21:00-21:59	0.3	2.2	2.1	3.1	2.1	2.6	4.1	16
22:00-22:59	2.3	0.2	1.1	3.1	10.1	2.6	3.1	22
23:00-23:59	1.3	2.2	2.1	2.4	15.3	9.6	3.1	36
Total	31	36	41	48	83	119	100	458